

3S2P panels:
 $V_{oc} : 38,7 \times 3 \times 1,25 = 145V$
 $I_{sc} : 2 \times 9,38 = 18,8 A$
 $P : 1680W$



6 mm²

MC4 30A

Victron Bluesolar
 MPPT 150/45



Fuse: 20A
 MCB: 25A

Victron Multiplus II
 48/5000/70 - 50



MCB
 125A

100 mm²

100 mm²

DC Fuse
 200A

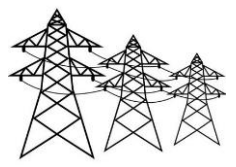
63A Main fuse



Carlo Gavazzi
 EM340
 Energy meter



1phase+ gnd



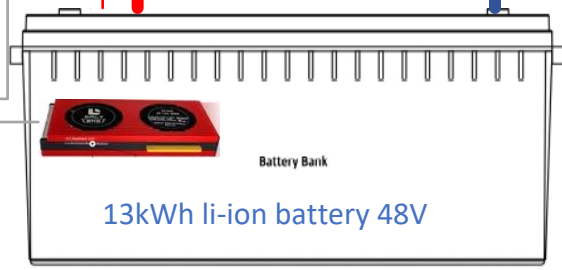
3Phase/3wire + gnd
 230V IT Grid
 (Delta)

Parallell grid
 inverter
 on 2nd phase
 3,0 KW

Parallell grid
 inverter
 on 3rd phase
 3,3 KW



Rpi 3b with
 Vesus OS



13kWh li-ion battery 48V