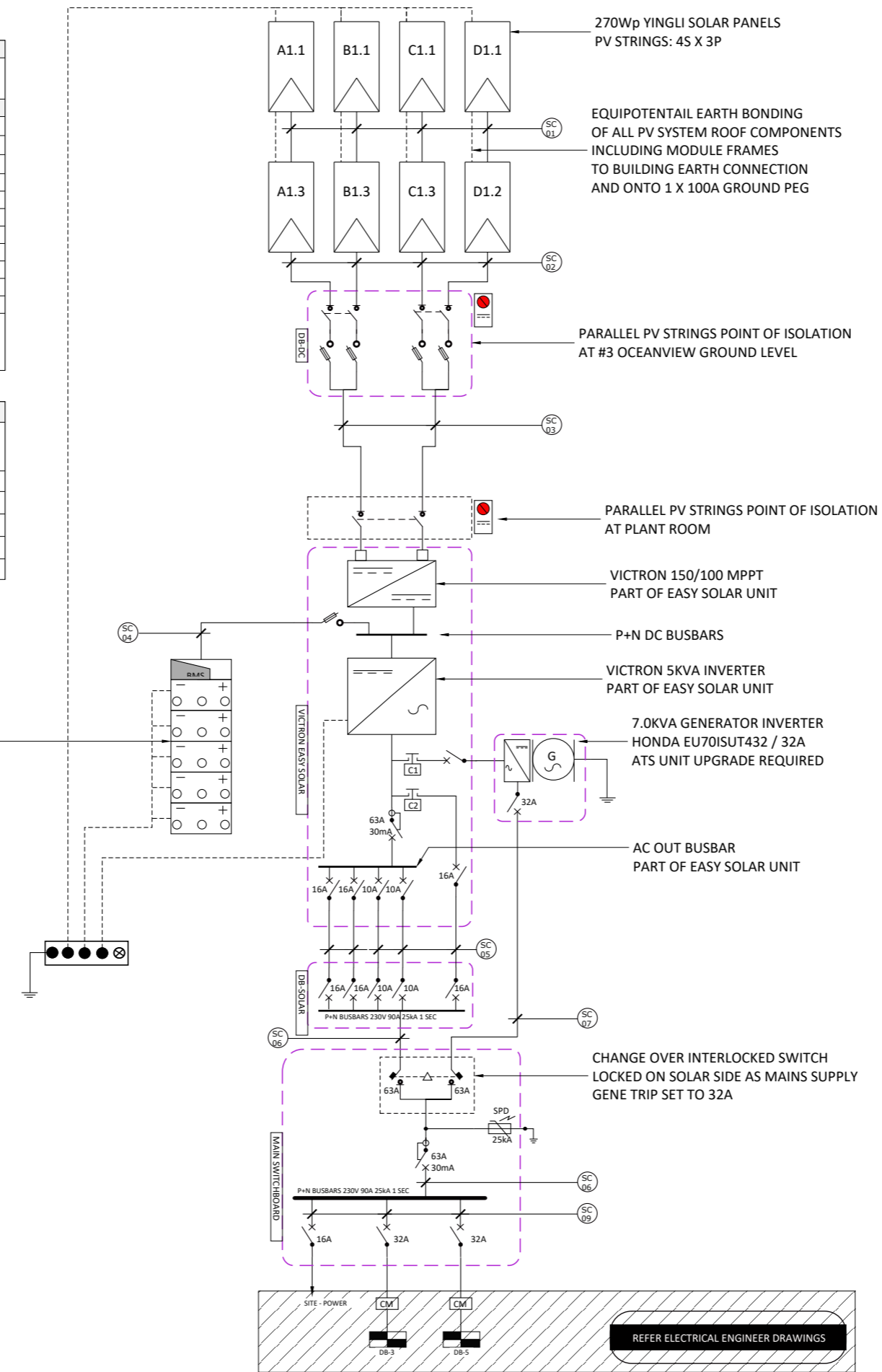
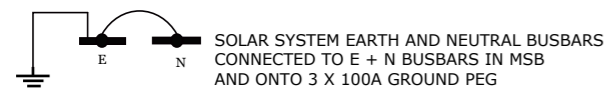


CABLE SCHEDULE				
All DC cables shall be solar and fire rated and shall be installed in accordance with AS/NZS5033, AS/NZS 3000, AS/NZS 3008 and AS/NZS 61439				
TAG	CABLE	From/To	LONGEST 1-WAY RUN	V(drop)
SC01	PV MODULE FLY LEADS 2 x 4mm ²	String junction box	3.6 m	0.127 (0.027%)
SC02	TRICAB SOLAR LSZH - 2C 4mm ² +E (6mm ²)	PV strings A-B-C-D to Combiner DB-DC	12 m	6.094V (1.082%)
SC03	TRICAB SOLAR LSZH - 2C 16mm ² +E (16mm ²)	Combiner DB-DC to Inverter	35 m	7.645V (1.03%)
SC04	XLPE FLEXI - 2 X 1C 25mm ² + E(25mm ²)	BESS to Inverter	2 m	3.684V (0.921%)
SC05	XLPE FLEXI - 2C 2.5mm ² + E(25mm ²)	Inverter to DB-Solar	2 m	0.638V (0.16%)
SC06	XLPE FLEXI - 2C 10mm ² + E(25mm ²)	DB-Solar to MSB	2 m	1.993V (0.498%)
SC07	XLPE FLEXI - 2C 10mm ² + E(25mm ²)	Generator Bypass to MSB	7 m	0.944 (0.411%)
SC08			n.a	-
SC09	PVC - 2C 16mm ² + E(16mm ²)	MSB to DB-3	35 m	3.10V (1.35%)
SC10	PVC - 2C 10mm ² + E(16mm ²)	MSB to DB-5	20 m	2.80V (1.20%)
SC11	CAT-6: 4 TWISTED PAIRS UTP	Inverter to modem	Comms (50m max)	-
Calculated System Vrise - Inverter plant to MSB (2m) = 1.69V (0.735%) <2% = OK				Total DC = 3.301% Total AC = 0.735%

PV STRING SCHEDULE									
INVERTER	STRING ID	MODULE	COUNT	RATING	AZIMUTH	TILT	Voc (@2°C)	Isc (@2°C)	FEED POINT
Easy Solar 5kVA	A1.1 - A1.3	YL-270W	3	0.810 kWp	30° NW	20°	113.7V	9.27A / 18.54A	MPPT-A-MC4-1
	B1.1 - B1.3	YL-270W	3	0.810 kWp	30° NW	20°	113.7V		MPPT-A-MC4-1
	C1.1 - C1.3	YL-270W	3	0.810 kWp	30° NW	20°	113.7V	9.27A / 18.54A	MPPT-B-MC4-1
	D1.1 - D1.3	YL-270W	3	0.810 kWp	30° NW	20°	113.7V		MPPT-B-MC4-1
Special instructions:		PV Array isolation point and fused parallel connection of PV strings shall be made at #3 Oceanview							

28kWh 48V BESS
PYLONTECH U3000
8 X 3.5kWh MODULES



COPYRIGHT YEH RENEWABLE ENERGY CONSULTANTS
THE USE OF AND RELIANCE UPON THE INFORMATION CONTAINED IN THIS DOCUMENT BY OTHERS PRIOR TO WRITTEN CONSENT FROM YEH WILL BE AT SUCH PERSON'S SOLE RISK. YEH ACCEPTS NO RESPONSIBILITY OR LIABILITY FOR THE CONSEQUENCES OF UNAUTHORIZED USE OF THIS DOCUMENT.

ALL DIMENSIONS ARE TO BE CHECKED ON SITE BY THE CONTRACTOR PRIOR TO COMMENCING WORK



29A Findlay St. Ellerslie, Auckland 1051
Phone: +64 21 295 8903
Email: Yariv@YEH.co.nz
Web: YEH.co.nz