

# Battery Firmware Upgrade Manual

V2.0  
27<sup>nd</sup> February, 2023



## CONTENTS

1. Determine Your Battery Version.....	3
E-Box-48100R-A Version .....	3
E-Box-48100R-B Version .....	3
E-Box-48100R-C Version .....	3
2. Prepare for the Upgrade .....	4
Step 1. Download the upgrade documents .....	4
Step 2. Get the suitable cable.....	4
3. Start Upgrading.....	5
Step 1. Connect the cable .....	5
Step 2. Turn on the Battery.....	7
Step 3. Run the BMSQt to Upgrade.....	7

# 1. Determine Your Battery Version

## E-Box-48100R-A Version

1. Link Port 0 and Link Port 1 in Vertical Line
2. 4 Position DIP switch (ADD)



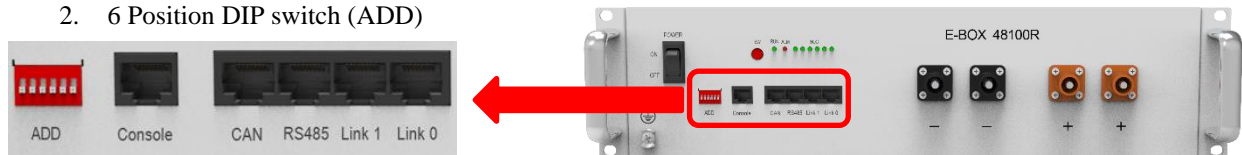
## E-Box-48100R-B Version

1. Link Port 0 and Link Port 1 in Horizontal Line
2. 4 Position DIP switch (ADD)



## E-Box-48100R-C Version

1. Link Port 0 and Link Port 1 in Horizontal Line
2. 6 Position DIP switch (ADD)



Version of 48100R	Normal use	Use with hub
A	SPBMS16SRP2111V1. <u>1</u> .6.C8.bin	SPBMS16SRP2111V1. <u>2</u> .6.C8.bin
B	SPBMS16SRP2111V1. <u>3</u> .23.C8.bin	SPBMS16SRP2111V1. <u>4</u> .23.C8.bin
C	SPBMS16SRP2203V1. <u>5</u> .24. <u>C8</u> .bin	
C16	SPBMS16SRP2205V1. <u>5</u> .14. <u>C16</u> .bin	

### Important Notice:

Please read this before proceeding with any operation. It is crucial to verify that the firmware version is correct. Using an incorrect version may result in a battery crash.

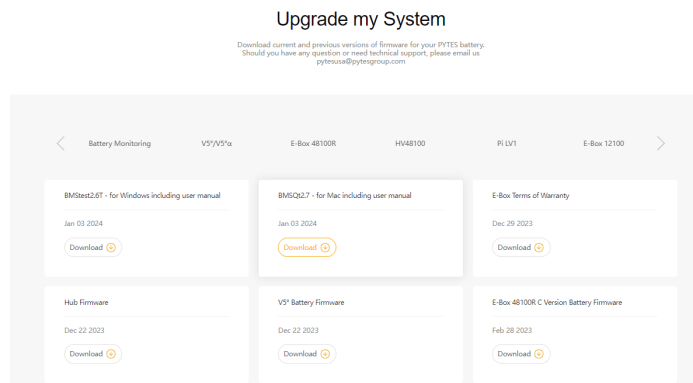
For any inquiries or concerns, kindly email [ess\\_support@pytesgroup.com](mailto:ess_support@pytesgroup.com). Thank you for your cooperation!

## 2. Prepare for the Upgrade

### Step 1. Download the upgrade documents

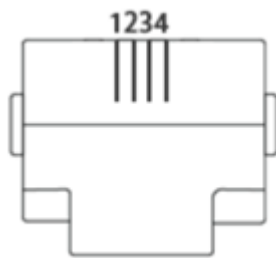
Download documents package from this link:

<https://www.pytesusa.com/Upgrade-my-System/>

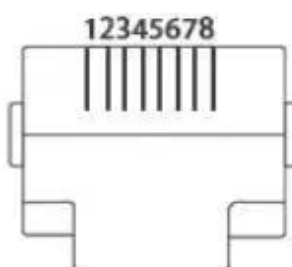


### Step 2. Get the suitable cable

Type I for E-Box-48100R A  
Version  
(4 pin/RJ11 to USB)



Type II for E-Box-48100R  
B&C Version  
(8 pin/RJ45 to USB)



## 3. Start Upgrading

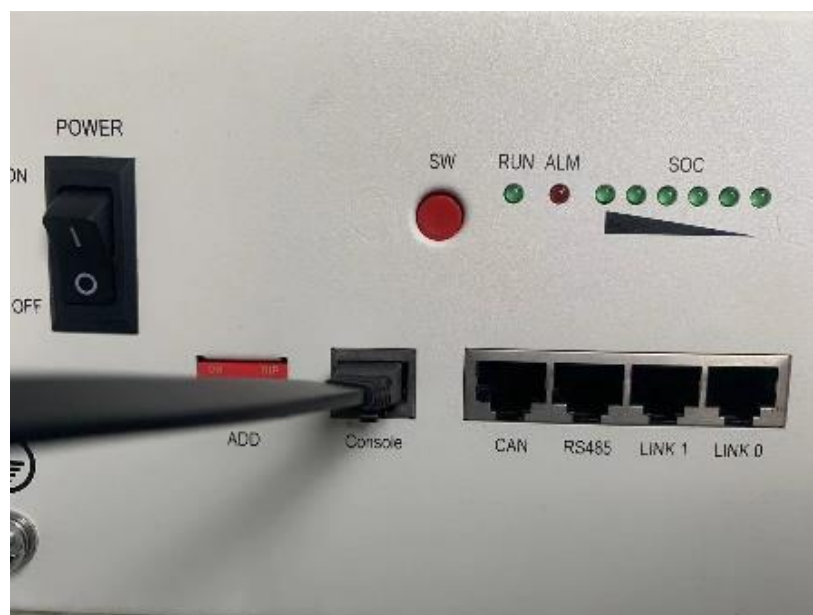
### Step 1. Connect the cable

Connect the battery and PC/laptop with the Cable. The crystal end plugs in battery Console port and USB end plug in your PC/laptop.

\*Use the RJ11 to USB cable for E-Box-48100R A Version

Use the RJ45 to USB cable for E-Box-48100R B&C Version

**Battery End**



**Computer End**



## Step 2. Turn on the Battery

After wiring, turn on the battery Power button and press the SW button for one second.



## Step 3. Run the BMSQt to Upgrade

Name	Date modified	Type	Size
bearer	8/3/2023 3:41 PM	File folder	
iconengines	8/3/2023 3:42 PM	File folder	
imageformats	8/3/2023 3:42 PM	File folder	
log	1/4/2024 4:11 PM	File folder	
platforms	8/3/2023 3:41 PM	File folder	
styles	8/3/2023 3:41 PM	File folder	
translations	8/3/2023 3:42 PM	File folder	
BMSQt.exe	8/3/2023 3:41 PM	Application	1,869 KB
D3Dcompiler_47.dll	8/3/2023 3:41 PM	Application extens...	3,386 KB
data.txt	11/24/2023 6:00 PM	Text Document	2 KB
libEGL.dll	8/3/2023 3:40 PM	Application extens...	66 KB
libgcc_s_dw2-1.dll	8/3/2023 3:40 PM	Application extens...	112 KB
libGLSv2.dll	8/3/2023 3:41 PM	Application extens...	7,607 KB
libstdc++-6.dll	8/3/2023 3:40 PM	Application extens...	1,507 KB
libwinpthread-1.dll	8/3/2023 3:40 PM	Application extens...	46 KB
opengl32sw.dll	8/3/2023 3:40 PM	Application extens...	15,621 KB
protection value.txt	11/24/2023 6:00 PM	Text Document	6 KB
Qt5Charts.dll	8/3/2023 3:40 PM	Application extens...	2,472 KB
Qt5Core.dll	8/3/2023 3:41 PM	Application extens...	8,263 KB

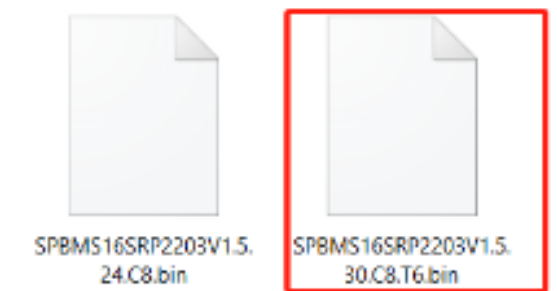
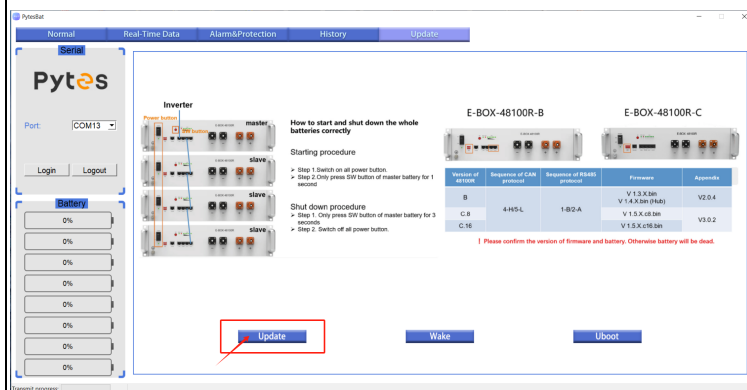
→Choose COMX Port  
→New Connection →COMX\*  
→Click Login

\*The COM number may vary, it doesn't matter.

→Click Update in the Menu banner

→First, Click Update to upgrade the battery firmware

→Enter the password:123456  
→Review the file path, choose the bootloader bin file and upload



Please wait for the transmission progress completed

