

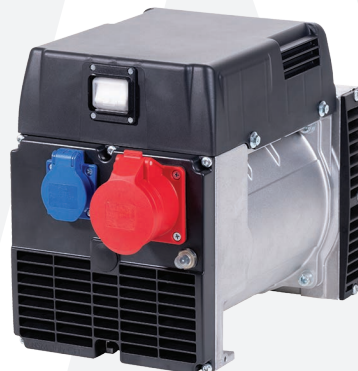
## ALTERNATORI TRIFASE - 2 Poli THREE-PHASE ALTERNATORS - 2 Poles

### Z100

A spazzole e compound  
Brush with Compound

### ZR100

A spazzole con AVR-d  
Brush with AVR-d



Caratteristiche tecniche
<b>Z100</b>
<b>Tensione standard</b> 50Hz: 230/400V, 240/415V 60Hz: 127/220V, 220/380V Altri valori a richiesta
<b>Classe d'isolamento H</b>
<b>Protezione IP 23</b>
<b>T.H.D. ≤ 6%</b>
<b>Precisione tensione ± 6% (cosφ = 0,9)</b>
<b>Capacità di spunto (Icc ≥ 4In)</b>
<b>Optional</b> Quadro elettrico, Carica batterie
<b>ZR100</b>
<b>Tensione standard</b> 50Hz: range 230÷240/400÷415V 60Hz: 127/220V, 220/380V Altri valori a richiesta
<b>Classe d'isolamento H</b>
<b>Protezione IP 23</b>
<b>T.H.D. ≤ 6%</b>
<b>Precisione tensione ± 1,5% (indipendentemente dal cosφ)</b>
<b>Capacità di spunto (Icc ≥ 3In)</b>
<b>Optional</b> Quadro elettrico, Carica batterie
<b>Regolatore automatico di tensione AVR960D</b> • Provvisto di protezioni per Sottovelocità, Massima tensione, Massima corrente di eccitazione, Sovraccarico prolungato (max kVA) • Possibilità di regolare la tensione a distanza

Technical characteristics
<b>Z100</b>
<b>Standard voltage</b> 50Hz: 230/400V, 240/415V 60Hz: 127/220V, 220/380V Other voltages on request
<b>Insulation class H</b>
<b>Protection IP 23</b>
<b>T.H.D. ≤ 6%</b>
<b>Voltage accuracy ± 6% (cosφ = 0,9)</b>
<b>Starting capacity (Icc ≥ 4In)</b>
<b>Optional</b> Electrical panel, Battery charger
<b>ZR100</b>
<b>Standard voltage</b> 50Hz: range 230÷240/400÷415V 60Hz: 127/220V, 220/380V Other voltages on request
<b>Insulation class H</b>
<b>Protection IP 23</b>
<b>T.H.D. ≤ 6%</b>
<b>Voltage accuracy ± 1,5% (regardless of cosφ)</b>
<b>Starting capacity (Icc ≥ 3In)</b>
<b>Optional</b> Electrical panel, Battery charger
<b>Automatic Voltage Regulator AVR960D</b> • Supplied with protections for Underspeed, Maximum voltage, Maximum excitation current, Prolonged overload (max kVA) • Remotely adjustable voltage regulator

Modello Model	Potenza Output Power		Potenza assorbita Driving Power		Potenza Output Power		Potenza assorbita Driving Power		Peso Weight		
	3 ph cosφ 0,8 [kVA]	1 ph Y cosφ 1 [kVA]	4/4 - cosφ 0,8 [kW]    η %		3 ph cosφ 0,8 [kVA]	1 ph Y cosφ 1 [kVA]	4/4 - cosφ 0,8 [kW]    η %		cone [kg]	B34 [kg]	SAE [kg]
	50Hz - 3000rpm				60Hz - 3600rpm						
Z100 SB	6,0	2,7	6,1	79,0	7,5	3,7	7,5	80,0	28,5	30,0	32,0
Z100 SC	7,0	3,5	7,0	80,0	9,0	4,5	8,9	81,0	30,0	31,5	33,5
Z100 SCM	7,0	4,0	7,0	80,5	---	---	---	---	30,5	32,0	34,0
Z100 LA	8,5	4,5	8,3	82,0	11,0	5,5	10,6	83,0	36,0	37,5	39,5
Z100 LB	10,0	5,0	9,5	84,0	13,0	6,5	12,2	85,0	40,0	41,5	43,5
ZR100 SA	5,5	2,7	5,7	77,0	7,0	3,5	7,2	78,0	25,0	26,5	28,5
ZR100 SC	7,0	3,5	6,9	81,0	9,0	4,5	8,8	82,0	27,0	28,5	30,5
ZR100 LA	8,5	4,5	8,2	83,0	11,0	5,5	10,5	84,0	33,0	34,5	36,5
ZR100 LB	10,0	5,0	9,4	85,0	13,0	6,5	12,1	86,0	37,0	38,5	40,5

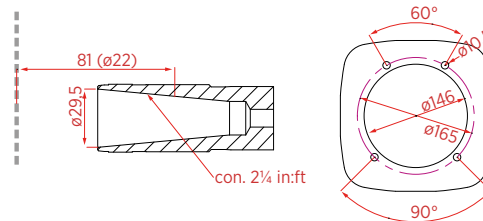
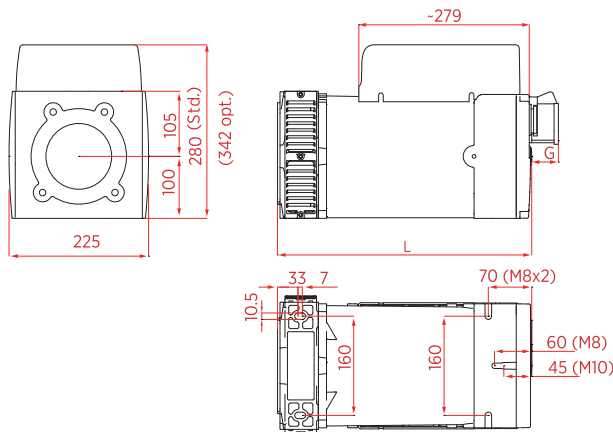
# Dimensioni di ingombro

## Overall Dimensions

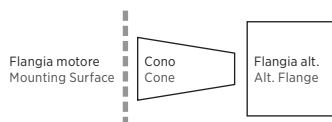
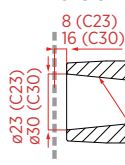
### CONE

#### J609b

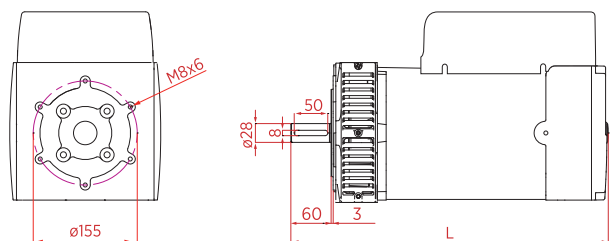
C 22  
C 25,4  
C 35



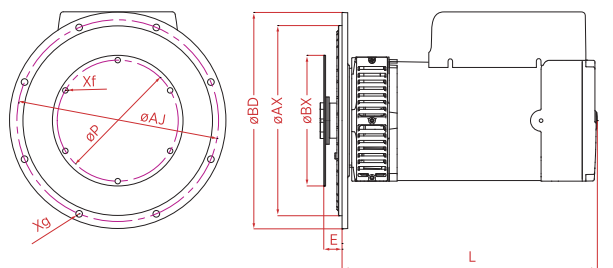
#### C 23 C 30



### B34



### SAE



SAE	Flangia   Flange				Xf	SAE	Giunto   Joint			
	ØBD	ØAX	ØAJ	ØAJ			ØBX	ØP	E	Xg
	(mm)						(mm)			
5	358	314,33	333,4	Ø11 (8)		6,5	215,9	200,02	30,2	Ø9 (6)
4	405	361,95	381,0	Ø11 (12)		7,5	241,3	222,25	30,2	Ø9 (8)

	cone	B34	SAE
	L		
	(mm)		
Z-ZR100 S-	345	408	357
Z-ZR100 L-	410	473	422

Prese   Sockets	G
	(mm)
Schuko	13
CEE 16A	55
CEE 32A	67
NEMA	1

Dati tecnici non impegnativi: NSM si riserva il diritto di apportare modifiche senza l'obbligo di darne preventiva comunicazione. Technical data not binding: NSM reserves the right to modify the contents without prior notice.