

Battery Firmware Upgrade Manual

V2.0
27nd February, 2023



CONTENTS

1. Determine Your Battery Version.....	3
E-Box-48100R-A Version	3
E-Box-48100R-B Version	3
E-Box-48100R-C Version	3
2. Prepare for the Upgrade	4
Step 1. Download the upgrade documents	4
Step 2. Get the suitable cable.....	4
3. Start Upgrading.....	5
Step 1. Connect the cable	5
Step 2. Turn on the Battery.....	7
Step 3. Run the BMSQt to Upgrade	7

1. Determine Your Battery Version

E-Box-48100R-A Version

1. Link Port 0 and Link Port 1 in Vertical Line
2. 4 Position DIP switch (ADD)



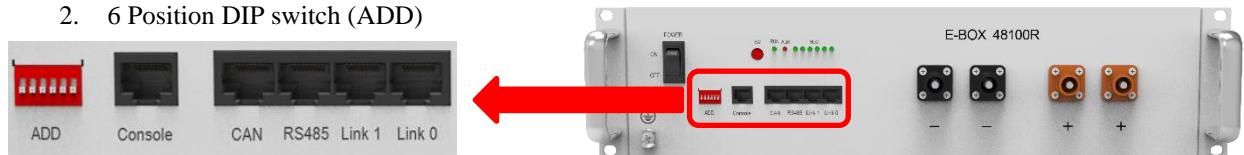
E-Box-48100R-B Version

1. Link Port 0 and Link Port 1 in Horizontal Line
2. 4 Position DIP switch (ADD)



E-Box-48100R-C Version

1. Link Port 0 and Link Port 1 in Horizontal Line
2. 6 Position DIP switch (ADD)



Version of 48100R	Normal use	Use with hub
A	SPBMS16SRP2111V1. <u>1</u> .6.C8.bin	SPBMS16SRP2111V1. <u>2</u> .6.C8.bin
B	SPBMS16SRP2111V1. <u>3</u> .23.C8.bin	SPBMS16SRP2111V1. <u>4</u> .23.C8.bin
C	SPBMS16SRP2203V1. <u>5</u> .24.C8.bin	
C16	SPBMS16SRP2205V1. <u>5</u> .14.C16.bin	

Important Notice:

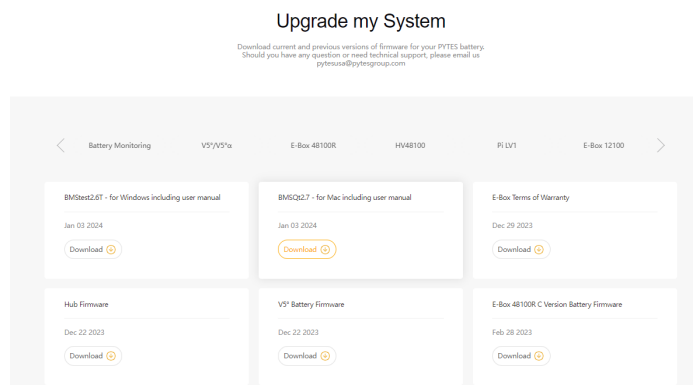
Please read this before proceeding with any operation. It is crucial to verify that the firmware version is correct. Using an incorrect version may result in a battery crash.

For any inquiries or concerns, kindly email ess_support@pytesgroup.com. Thank you for your cooperation!

2. Prepare for the Upgrade

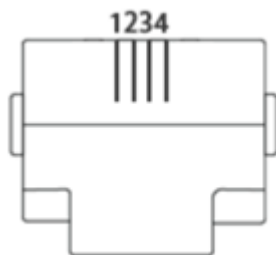
Step 1. Download the upgrade documents

Download documents package from this link:
<https://www.pytesusa.com/Upgrade-my-System/>

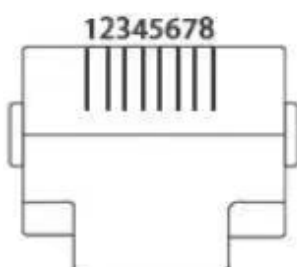


Step 2. Get the suitable cable

Type I for E-Box-48100R A
Version
(4 pin/RJ11 to USB)



Type II for E-Box-48100R
B&C Version
(8 pin/RJ45 to USB)



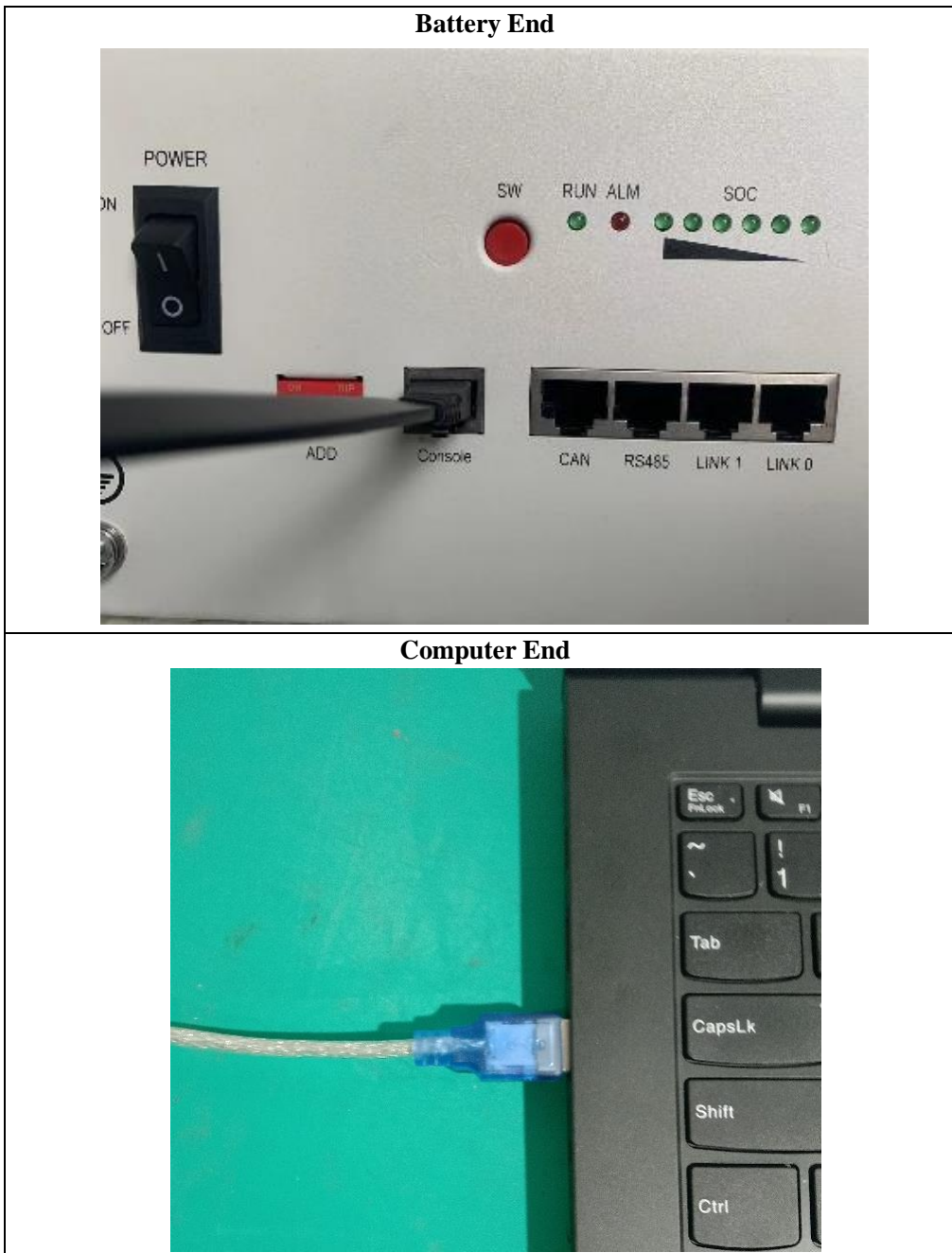
3. Start Upgrading

Step 1. Connect the cable

Connect the battery and PC/laptop with the Cable. The crystal end plugs in battery Console port and USB end plug in your PC/laptop.

*Use the RJ11 to USB cable for E-Box-48100R A Version

Use the RJ45 to USB cable for E-Box-48100R B&C Version



Step 2. Turn on the Battery

After wiring, turn on the battery Power button and press the SW button for one second.



Step 3. Run the BMSQt to Upgrade

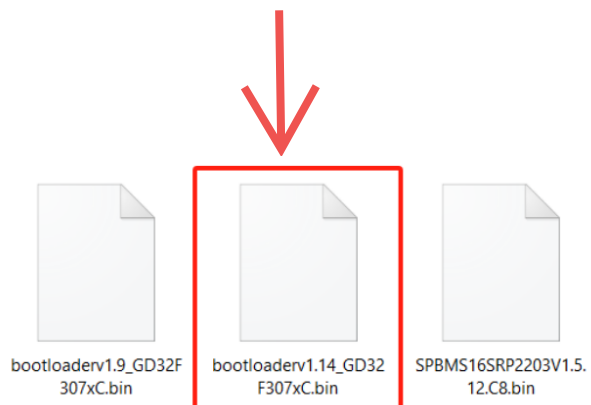
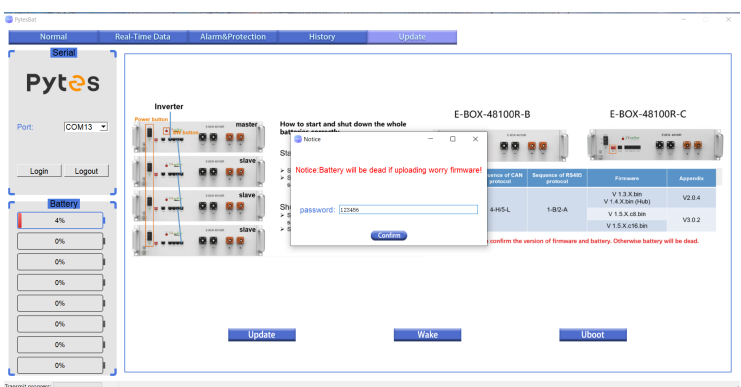
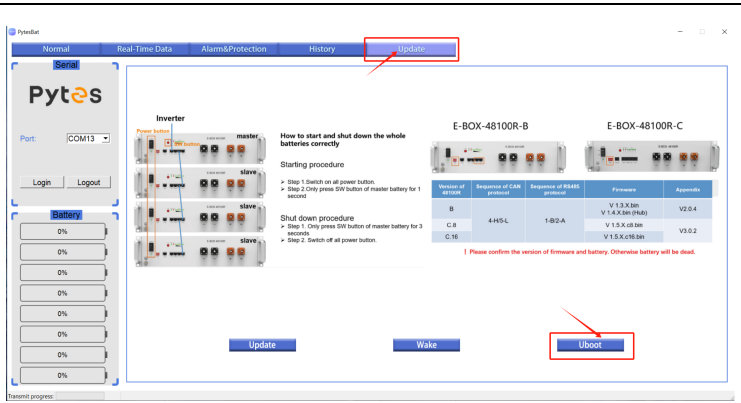
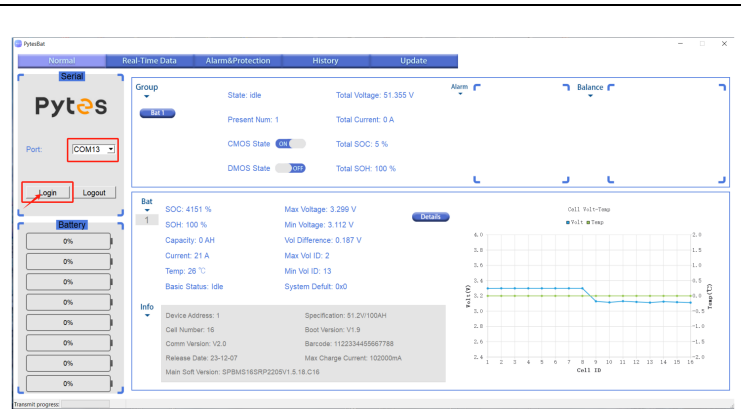
Name	Date modified	Type	Size
bearer	8/3/2023 3:41 PM	File folder	
iconengines	8/3/2023 3:42 PM	File folder	
imageformats	8/3/2023 3:42 PM	File folder	
log	1/4/2024 4:11 PM	File folder	
platforms	8/3/2023 3:41 PM	File folder	
styles	8/3/2023 3:41 PM	File folder	
translations	8/3/2023 3:42 PM	File folder	
BMSQt.exe	8/3/2023 3:41 PM	Application	1,869 KB
D3Dcompiler_47.dll	8/3/2023 3:41 PM	Application extens...	3,386 KB
data.txt	11/24/2023 6:00 PM	Text Document	2 KB
libEGL.dll	8/3/2023 3:40 PM	Application extens...	66 KB
libgcc_s_dw2-1.dll	8/3/2023 3:40 PM	Application extens...	112 KB
libGLESw2.dll	8/3/2023 3:41 PM	Application extens...	7,607 KB
libstdc++-6.dll	8/3/2023 3:40 PM	Application extens...	1,507 KB
libwinpthread-1.dll	8/3/2023 3:40 PM	Application extens...	46 KB
opengl32sw.dll	8/3/2023 3:40 PM	Application extens...	15,621 KB
protection value.txt	11/24/2023 6:00 PM	Text Document	6 KB
Qt5Charts.dll	8/3/2023 3:40 PM	Application extens...	2,472 KB
Qt5Core.dll	8/3/2023 3:41 PM	Application extens...	8,263 KB

- Choose COMX Port
- New Connection →COMX*
- Click Login

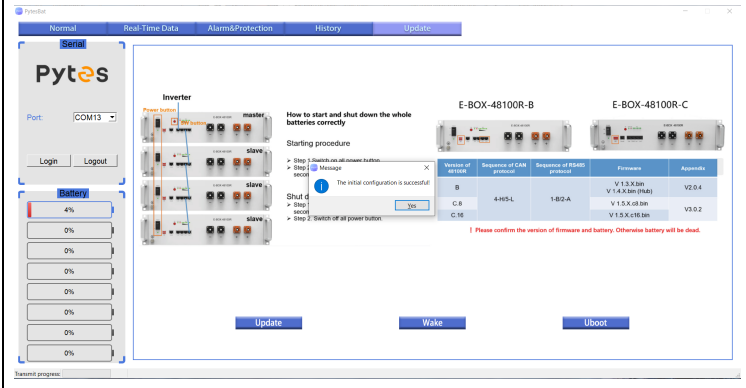
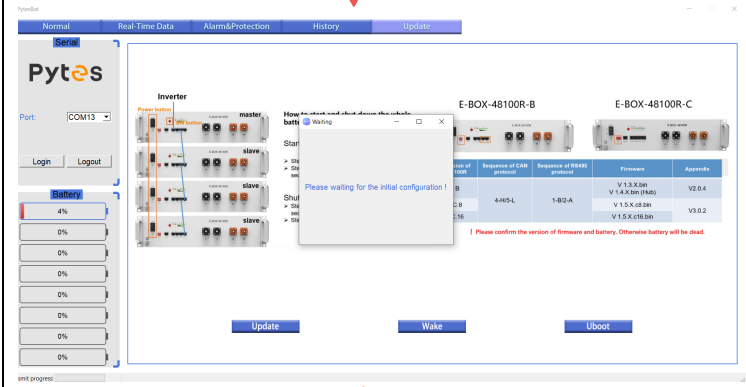
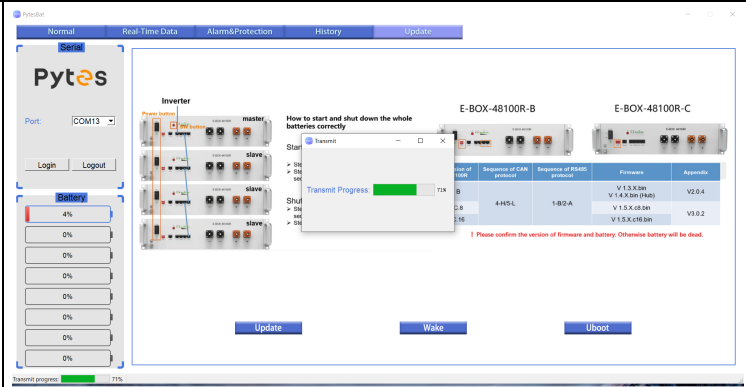
*The COM number may vary, it doesn't matter.

- Click Update in the Menu banner
- First, Click Uboot to upgrade the bootloader

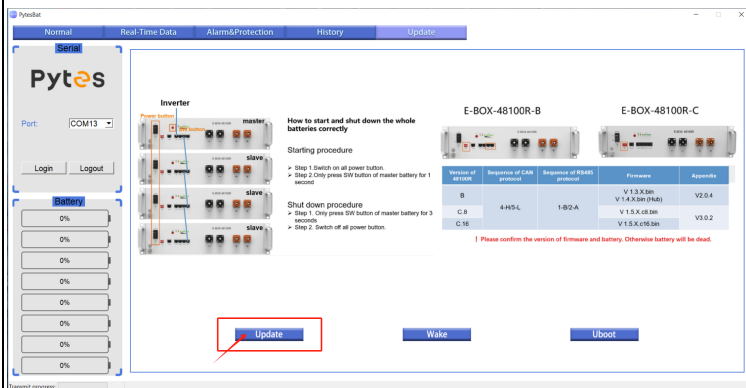
- Enter the password:123456
- Review the file path, choose the bootloader bin file and upload



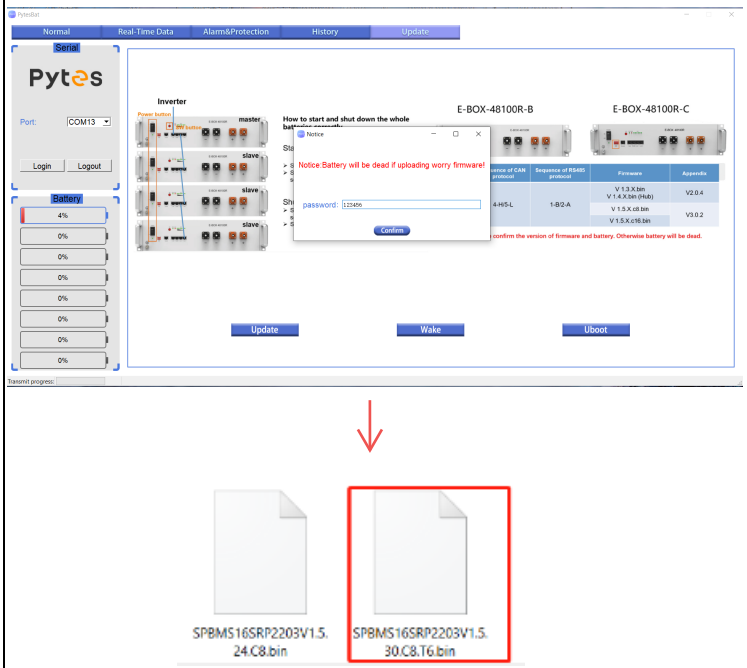
Please wait for the transmission progress completed



Click Update to upgrade the battery firmware



→Enter the password:123456
 →Review the file path, choose the SPBMS bin file and upload



Please wait for the transmission progress completed

